

Tug & Spin Busy Bee



VTech understands that a child's needs and abilities change as they grow and with that in mind we develop our toys to teach and entertain at just the right level...

vtech Baby

Toys that will stimulate their interest in different textures, sounds and colours

I am...

...responding to colours, sounds and textures

...understanding cause and effect

...learning to touch, reach, grasp, sit-up, crawl and toddle

Birth-36 months



Pre-School

Interactive toys to develop their imagination and encourage language development

I want...

...to get ready for school by starting to learn the alphabet and counting

...my learning to be as fun, easy and exciting as can be

...to show my creativity with drawing and music so my whole brain develops

3-6 years



Electronic Learning Computers

Cool, aspirational and inspiring computers for curriculum related learning

I need...

...challenging activities that can keep pace with my growing mind

...intelligent technology that adapts to my level of learning

...National Curriculum based content to support what I'm learning at school

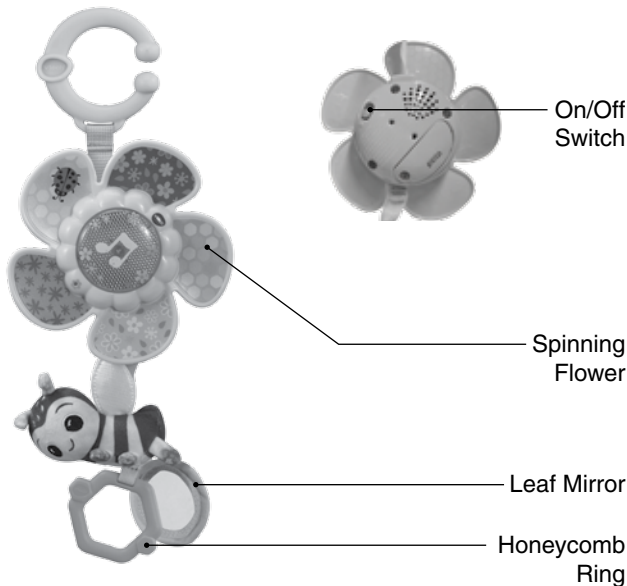
4-10 years



To learn more about this and other VTech® products, visit www.vtech.co.uk

INTRODUCTION

Introducing the **Tug & Spin Busy Bee** by **VTech®**! This cute little bumble bee is great for on the go play. Pull the honeycomb shaped ring or leaf mirror down to see the flower spin and to trigger fun phrases and sing-along songs. The C ring easily attaches to pushchairs or Infant Carriers!



INCLUDED IN THIS PACKAGE

- Tug & Spin Busy Bee
- Quick Start Guide

WARNING

All packing materials such as tape, plastic sheets, packaging locks, removable tags, cable ties, cords and packaging screws are not part of this toy and should be discarded for your child's safety.

NOTE

Please save this Instruction Manual as it contains important information.

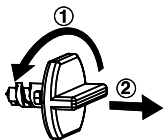
WARNING

Remove product from the Infant Carrier when the vehicle is moving.

WARNING

All packing materials such as tape, plastic sheets, packaging locks, removable tags, cable ties, cords and packaging screws are not part of this toy, and should be discarded for your child's safety.

Unlock the Packaging Locks :

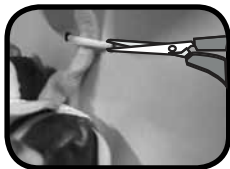


① Rotate the packaging locks anticlockwise 90 degrees.

② Pull out the packaging locks and discard.

NOTE :

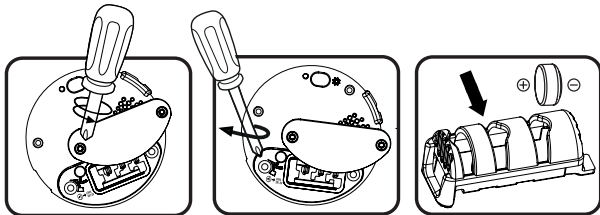
The cord is not part of this toy. For your child's safety, please cut and discard the cord before using the product.



GETTING STARTED

Battery Removal and Installation

1. Make sure the unit is turned **off**.
2. Find the battery cover located on the back of the unit, use a screwdriver to loosen the screw and then open the battery cover.
3. Remove the battery unit, use a screwdriver to loosen the screw.
4. Remove old button cell batteries by pushing the batteries out of the battery unit.
5. Install 3 new button cell batteries (LR44) following the diagram inside the battery unit.
6. Insert the battery unit, you will hear it click into place when inserted correctly.
7. Replace the battery cover and tighten to the screws to secure.



WARNING:

Adult assembly required for battery installation.
Keep batteries out of reach of children.



WARNING!

Contains button battery.

A button battery can cause serious injuries if swallowed or placed inside any part of the body.

Individual battery is hazardous. Dispose of used batteries immediately. Keep new and used batteries away from children.

If you think batteries might have been swallowed or placed inside any part of the body, seek immediate medical attention.

Australia

If you think batteries might have been swallowed or placed inside any part of the body, immediately call the 24-hour Poisons Information Centre on 13 11 26 for fast, expert advice.

IMPORTANT: BATTERY INFORMATION

- Insert batteries with the correct polarity (+ and -).
- Do not mix old and new batteries.
- Do not mix alkaline, standard (carbon-zinc) or rechargeable batteries.
- Only batteries of the same or equivalent type as recommended are to be used.
- Do not short-circuit the supply terminals.
- Remove batteries during long periods of non-use.
- Remove exhausted batteries from the toy.
- Dispose of batteries safely. Do not dispose of batteries in fire.

RECHARGEABLE BATTERIES:

- Remove rechargeable batteries (if removable) from toy before charging.
- Rechargeable batteries are only to be charged under adult supervision.
- Do not charge non-rechargeable batteries.

Disposal of batteries and product



The crossed-out wheellie bin symbols on products and batteries, or on their respective packaging, indicates they must not be disposed of in domestic waste as they contain substances that can be damaging to the environment and human health.



The chemical symbols Hg, Cd or Pb, where marked, indicate that the battery contains more than the specified value of mercury (Hg), cadmium (Cd) or lead (Pb) set out in the Batteries and Accumulators Regulation.

The solid bar indicates that the product was placed on the market after 13th August, 2005.

Please dispose of your product and batteries responsibly.

In the UK, give this toy a second life by disposing of it at a small electricals collection point* so all of its materials can be recycled.

Learn more at:

www.vtech.co.uk/recycle

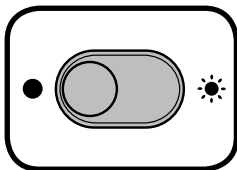
www.vtech.com.au/sustainability

* Visit www.recyclenow.com to see a list of collection points near you.

PRODUCT FEATURES

1. On/Off Switch

To turn the unit **On** ☀️, slide the **On/Off Switch** to the **On** ☀️ position. You will hear a playful song, a cute phrase and sounds. To turn the unit **Off**, slide the **On/Off Switch** to the **Off** ● position.



2. Automatic Shut-Off

To preserve battery life, the **Tug & Spin Busy Bee** will automatically power down after approximately 45 seconds without input. The unit can be turned on again by turning the **Spinning Flower** or pulling down the **Honeycomb Ring**.

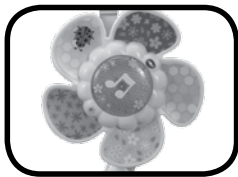
NOTE

If the unit repeatedly powers down during playing, please install a new set of button cell batteries.

ACTIVITIES

1. Spinning Flower

Spin the **Spinning Flower** to hear fun phrases, songs, sounds and melodies. When a song or a melody is playing, spin the **Spinning Flower** again to hear fun sounds play over the top of the song or melody. The lights will flash with the sounds.



2. Honeycomb Ring

Pull down the **Honeycomb Ring** to hear fun phrases and songs. When a song or melody is playing, pull the ring again to see lights flashing with fun sounds.



MELODY LIST

1. A-Tisket A-Tasket
2. The Entertainer
3. Girls and Boys Come Out to Play
4. Incy Wincy Spider
5. Little Miss Muffet
6. Mulberry Bush
7. One, Two, Buckle My Shoe
8. Skip to My Lou
9. Teddy Bears' Picnic
10. Toyland
11. Yankee Doodle
12. Looby Loo
13. Old MacDonald
14. Pat-A-Cake
15. Korsakov - Flight of the Bumble Bee

SONG LIST

Song 1

Hello, I'm a buzzy bee,
Pull my ring and you will see,
My flower spins around, I zoom all around.
Let's spin around happily.

Song 2

Roses are red,
Violets are blue,
My flower is colourful,
Just like you!

Song 3

I'm a busy little bumble bee,
I like to buzz from flower to flower!

Song 4

The colourful flower has five petals.
Let's count the petals,
One, two, three, four, five!

CARE & MAINTENANCE

1. Keep the unit clean by wiping it with a slightly damp cloth.
2. Keep the unit out of direct sunlight and away from any direct heat sources.
3. Remove the button cell batteries if the unit will not be in use for an extended period of time.
4. Do not drop the unit on a hard surface and do not expose the unit to excess moisture.
5. The soft bee is surface washable only.

TROUBLESHOOTING

If for some reason the unit stops working or malfunctions, please follow these steps:

1. Please turn the unit **Off**.
2. Interrupt the power supply by removing the batteries.
3. Let the unit sit for a few minutes, then replace the batteries.
4. Turn the unit On. The unit should now be ready to play with again.
5. If the unit still does not work, install a new set of batteries.

CONSUMER SERVICES

Creating and developing **VTech®** products is accompanied by a responsibility that we at **VTech®** take very seriously. We make every effort to ensure the accuracy of the information, which forms the value of our products. However, errors sometimes can occur. It is important for you to know that we stand behind our products and encourage you to call our Consumer Services Department with any problems and/or suggestions that you might have. A service representative will be happy to help you.

UK Customers:

Phone: 0330 678 0149 (from UK) or +44 330 678 0149 (outside UK)
Website: www.vtech.co.uk/support

Australian Customers:

Phone: 1800 862 155
Website: support.vtech.com.au

NZ Customers:

Phone: 0800 400 785
Website: support.vtech.com.au

PRODUCT WARRANTY/ CONSUMER GUARANTEES

UK Customers:

Read our complete warranty policy online at vtech.co.uk/warranty.

Australian Customers:

VTECH ELECTRONICS (AUSTRALIA) PTY LIMITED –
CONSUMER GUARANTEES

Under the Australian Consumer Law, a number of consumer guarantees apply to goods and services supplied by VTech Electronics (Australia) Pty Limited. Please refer to vtech.com.au/consumerguarantees for further information.

**Visit our website for more
information about our products,
downloads, resources and more.**

www.vtech.co.uk
www.vtech.com.au

